

# Heart

by

Ann Logan

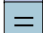
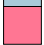
<http://www.cross-stitch-pattern.net>



This kit was designed and created on StitchCraft software

<http://www.stitchcraft.info>

# Key

Color	Symbol	Cat No.	Brand	Type	Stitches	Skeins
		3747	D.M.C.	Stranded Cotton	967	0.6
		162	D.M.C.	Stranded Cotton	642	0.4
		894	D.M.C.	Stranded Cotton	2834	1.6

## Notes

Material Type: Aida Generic White

Sewing Count: 14/inch or 55/100mm

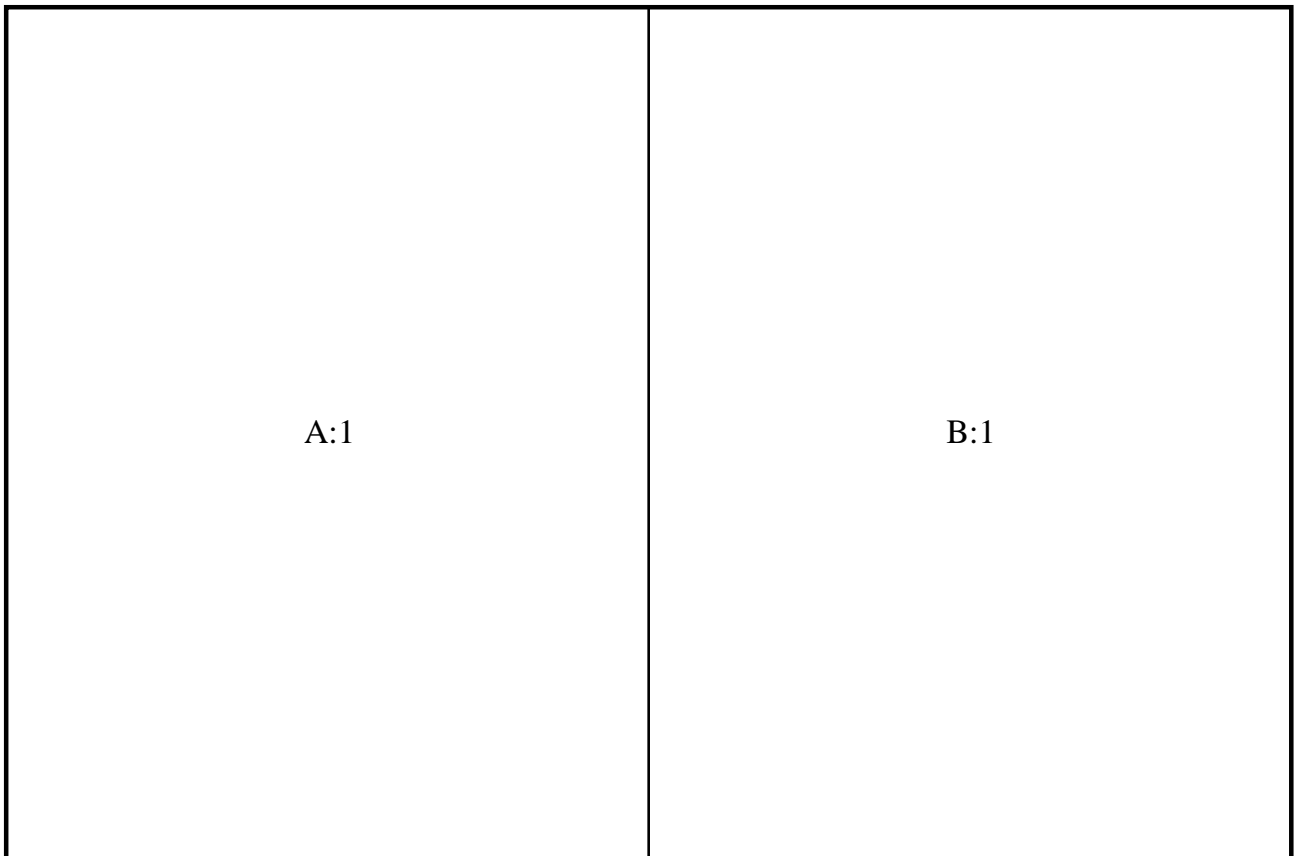
Design Size: 84 x 79 stitches

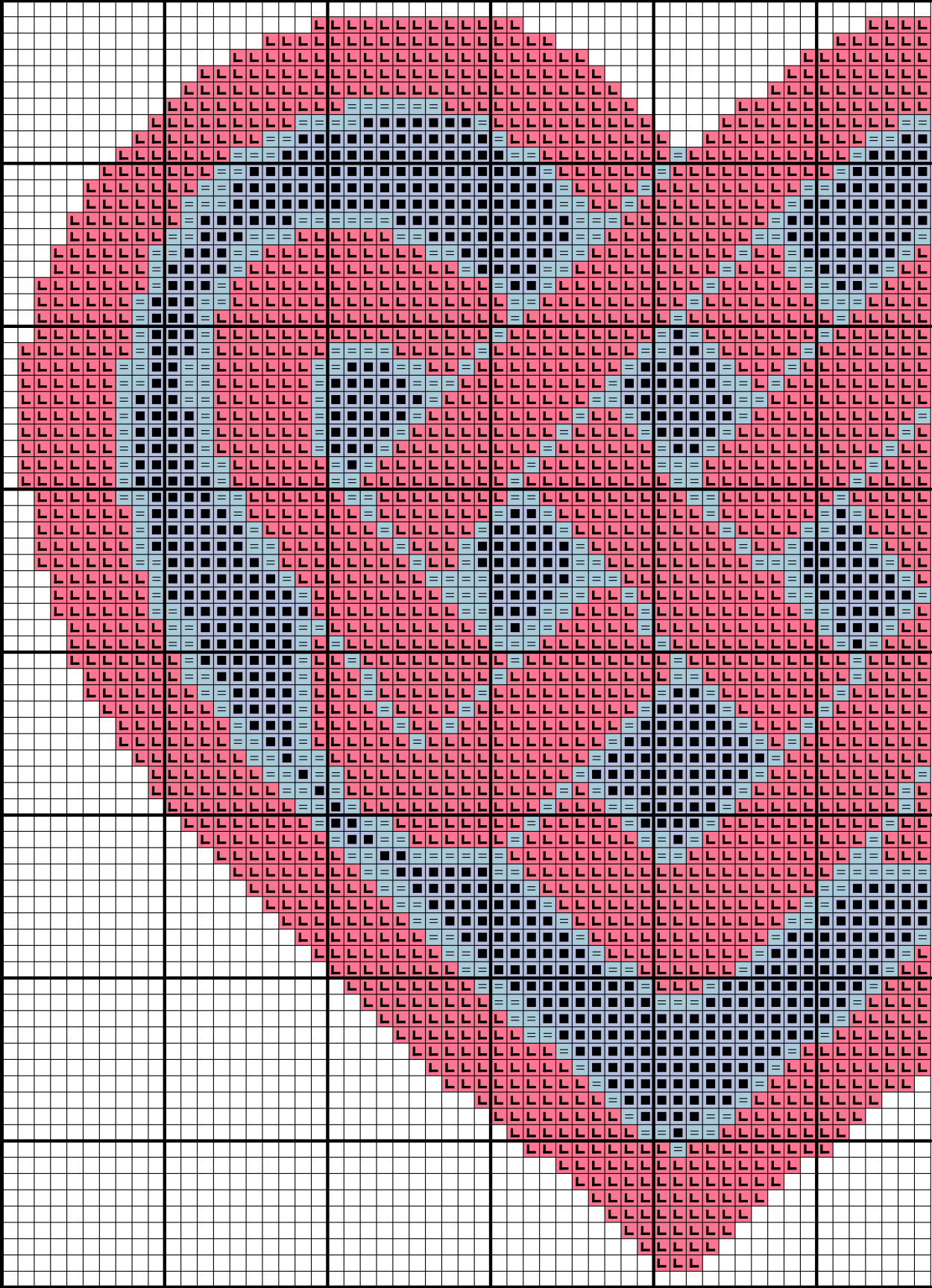
Sewn Design Size: 6 x 5.6 inches or 152 x 143 mm

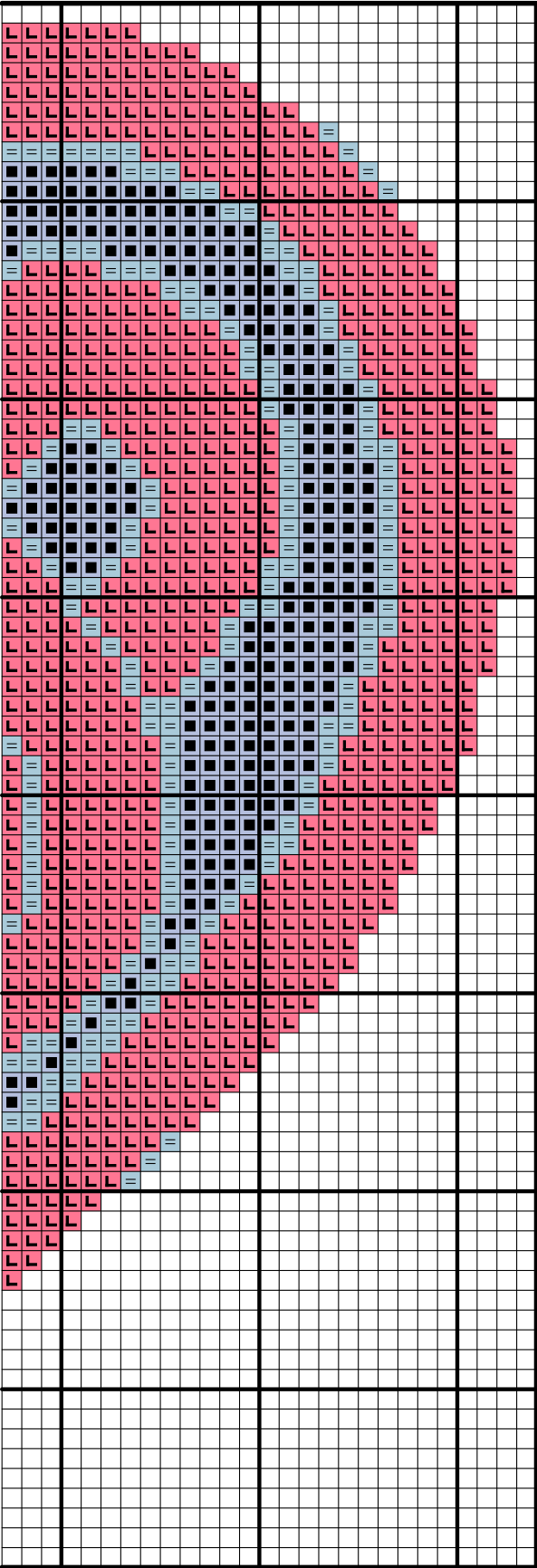
Suggested Material Size: 11.9 x 11.5 inches or 302 x 293 mm

Stitch Style: Cross-stitch Using 2 strands

Below is a plan showing how the chart pages fit together.  
The page number is shown at the top left of each chart page.





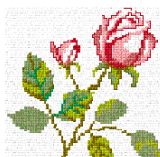
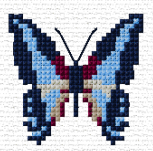


# StitchCraft

## *Design your own Cross Stitch on Computer!*

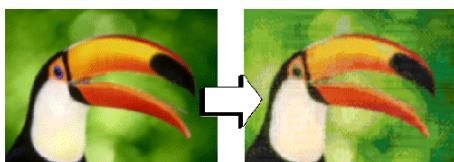
StitchCraft is the perfect tool for anyone who loves needlework. With StitchCraft you can sew the sample charts provided, easily turn photos into ready-to-sew charts or design your own beautiful charts for cross stitch, tapestry, knitting, rug hooking, beadwork and any other grid-based needlework. StitchCraft is easy-to-use leaving you free to be creative!

### Over 120 Sample Charts



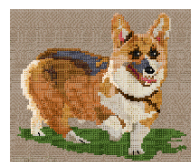
*StitchCraft* comes with over 120 ready to sew charts from top designers like DMC, Coats & Vivienne Garforth. The hardest part is choosing which design to sew first!

### Design Charts from Photos



Ever wished you could turn favourite photos into needlework designs? Now it's easy! *StitchCraft* will lead you through the options for your new chart, and in minutes it's ready to print out and sew.

### Designing Freehand

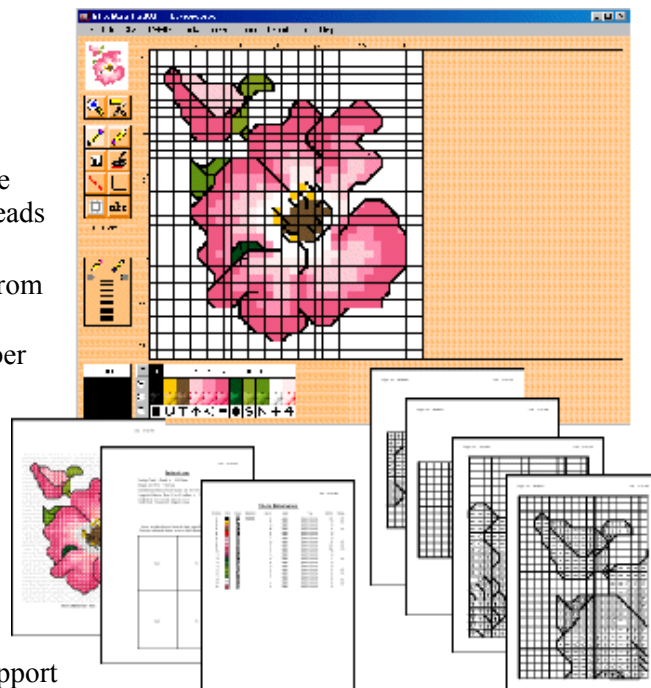


How about designing your own chart? *StitchCraft* has an extensive range of easy-to-use tools for designing your own charts. It won't be long before you're designing like a pro too.

### STITCHCRAFT ALLOWS YOU TO:

- Design charts using a large range of tools including full stitch, halfstitch & backstitch
- Move, copy, mirror & rotate sections of charts
- View your designs on screen in beautiful lifelike stitches - simulated cross stitch, tent stitch, & beads
- View by colour, symbols or both
- Design charts using thread & material colours from on screen catalogs, just like shade cards
- Match any colour to the nearest catalogue number
- Change colours and/or symbols at any stage
- Save cut-outs as library files
- Print charts in symbols or lifelike stitches
- Print the instructions & a key
- Print your designs straight onto material or transfer paper with Stampstitch
- Share your designs with your friends by e-mail
- Also *StitchCraft* comes with full on-screen tutorial, online help, manual & full technical support

Plus loads more...



For more information please visit us at: [www.stitchcraft.info](http://www.stitchcraft.info)